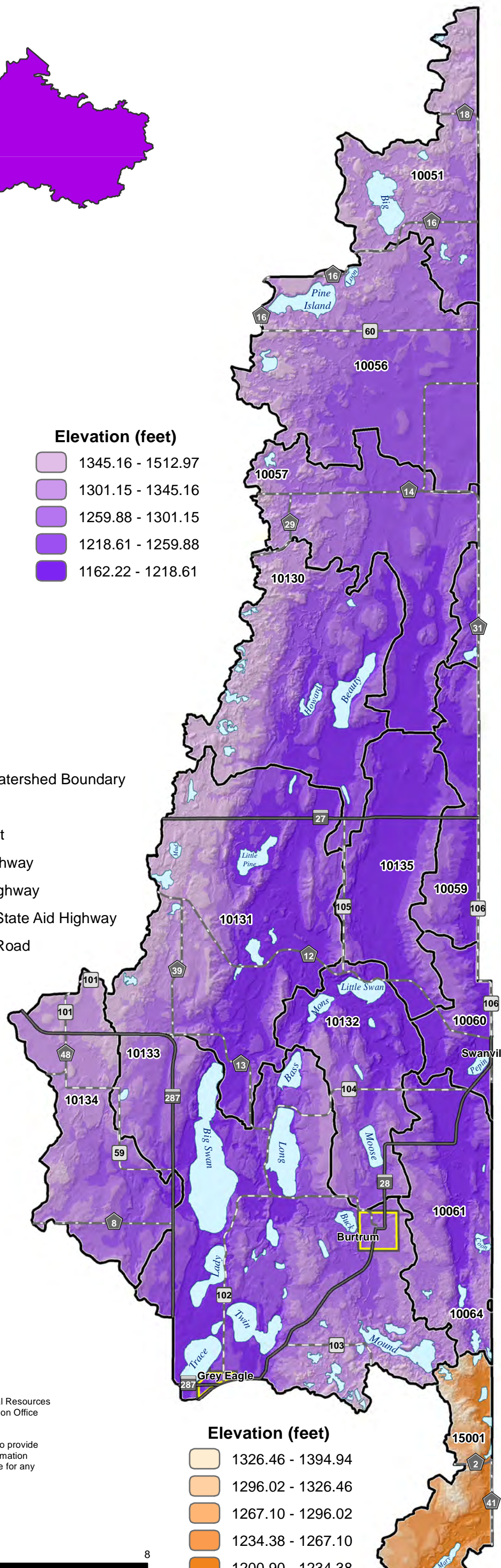
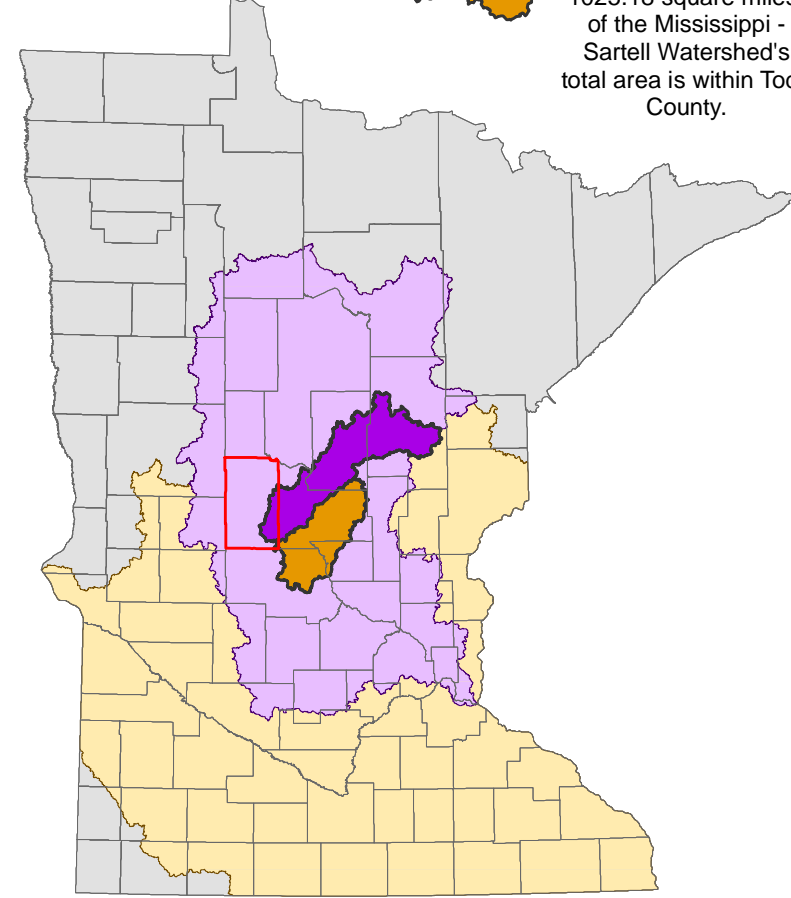
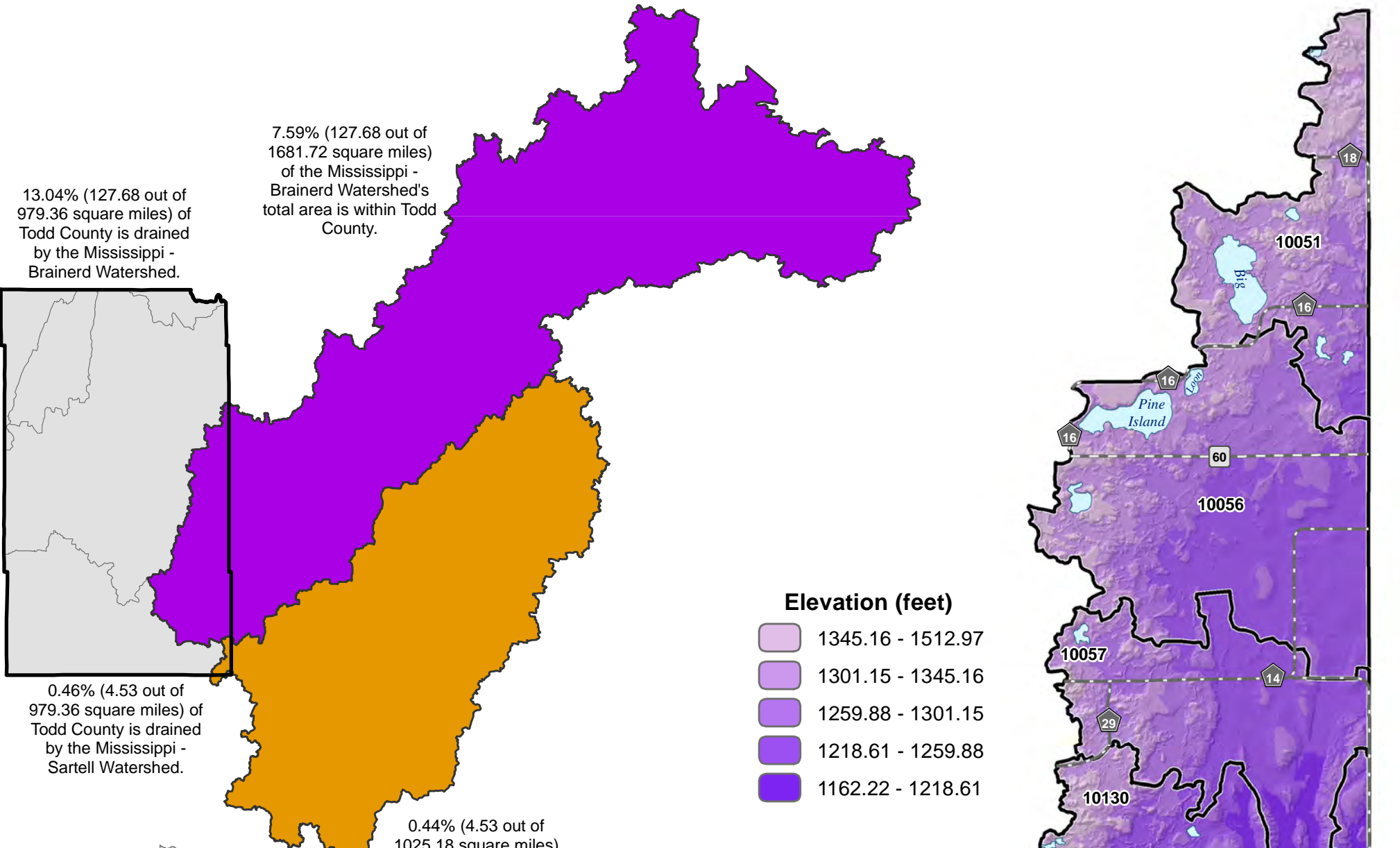


MISSISSIPPI - BRAINERD AND MISSISSIPPI - SARTELL WATERSHEDS



- DNR Level 4 Major Watershed**
- Mississippi River - Brainerd
- Mississippi River - Sartell
- DNR Level 2 Major Watershed**
- Mississippi Headwaters
- DNR Level 1 Major Watershed**
- Upper Mississippi
- Todd County Boundary
- County Boundary

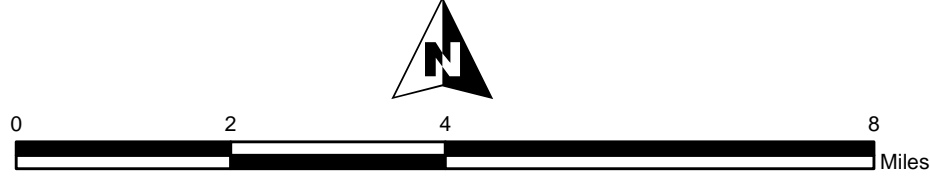
MINOR WATERSHEDS

ID #	Stream Name	Area (sq.miles)	Percent of Total
10051	Elk River	7.48	5.85%
10056	Little Elk River	15.33	12.01%
10057	Unknown	10.69	8.37%
10059	Irish Creek	4.05	3.17%
10060	Swan River	2.99	2.34%
10061	Molly Creek	7.41	5.80%
10064	Taylor Creek	0.01	0.01%
10130	Karlen Creek	12.38	9.69%
10131	Swan River	17.92	14.04%
10132	Swan River	7.35	5.75%
10133	Big Swan Lake	26.17	20.49%
10134	Schwanke Creek	8.61	6.74%
10135	Swan River	7.29	5.71%
Total		127.68	100.00%
15001	North Two River	4.53	100.00%
Total		4.53	100.00%

Created by:
Todd County GIS
215 1st Ave S, Ste. 102
Long Prairie, MN 56347
320-732-4248

Data Sources:
Watershed Data - MN Department of Natural Resources
Elevation Data - MN Geospatial Information Office
County Data - Todd County GIS

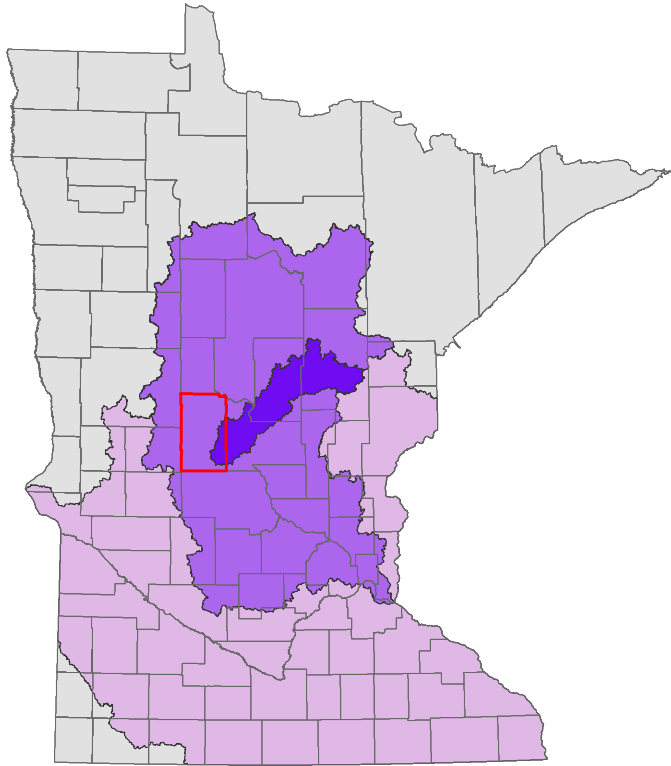
Todd County GIS has made every effort to provide the most accurate and up-to-date information available and cannot be held responsible for any unforeseen errors or omissions.



Mississippi - Brainerd Watershed

Minor Watersheds

ID #	Stream Name	Area (sq. miles)	Percent of Total
10051	Elk River	7.48	5.85%
10056	Little Elk River	15.33	12.01%
10057	Unknown	10.69	8.37%
10059	Irish Creek	4.05	3.17%
10060	Swan River	2.99	2.34%
10061	Molly Creek	7.41	5.80%
10064	Taylor Creek	0.01	0.01%
10130	Karlen Creek	12.38	9.69%
10131	Swan River	17.92	14.04%
10132	Swan River	7.35	5.75%
10133	Big Swan Lake	26.17	20.49%
10134	Schwanke Creek	8.61	6.74%
10135	Swan River	7.29	5.71%
Total		127.68	100.00%



HUC 8, DNR Level 4 Major Watershed

Mississippi River - Brainerd

HUC 4, DNR Level 2 Major Watershed

Mississippi Headwaters

HUC 2, DNR Level 1 Major Watershed

Upper Mississippi

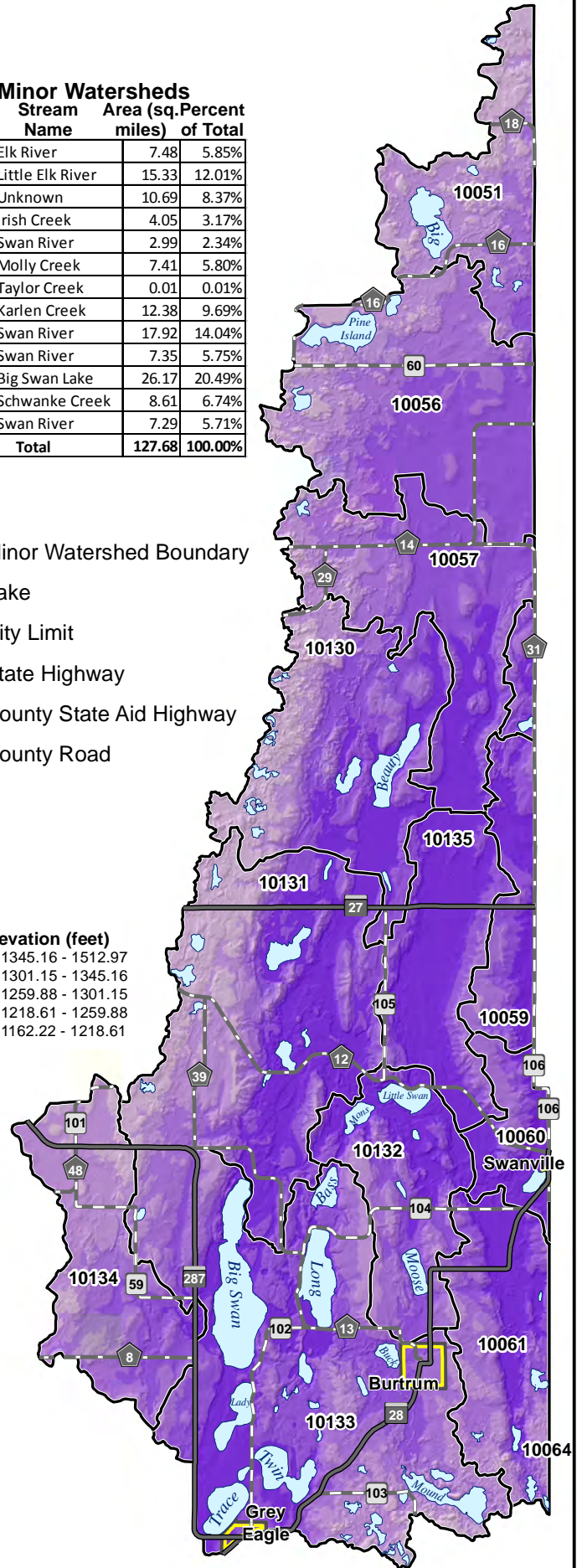
Todd County Boundary

County Boundary

- Minor Watershed Boundary
- Lake
- City Limit
- State Highway
- County State Aid Highway
- County Road

Elevation (feet)

- 1345.16 - 1512.97
- 1301.15 - 1345.16
- 1259.88 - 1301.15
- 1218.61 - 1259.88
- 1162.22 - 1218.61



Created by:

Todd County GIS
 215 1st Ave S, Ste. 102
 Long Prairie, MN 56347
 320-732-4248

Data Sources:

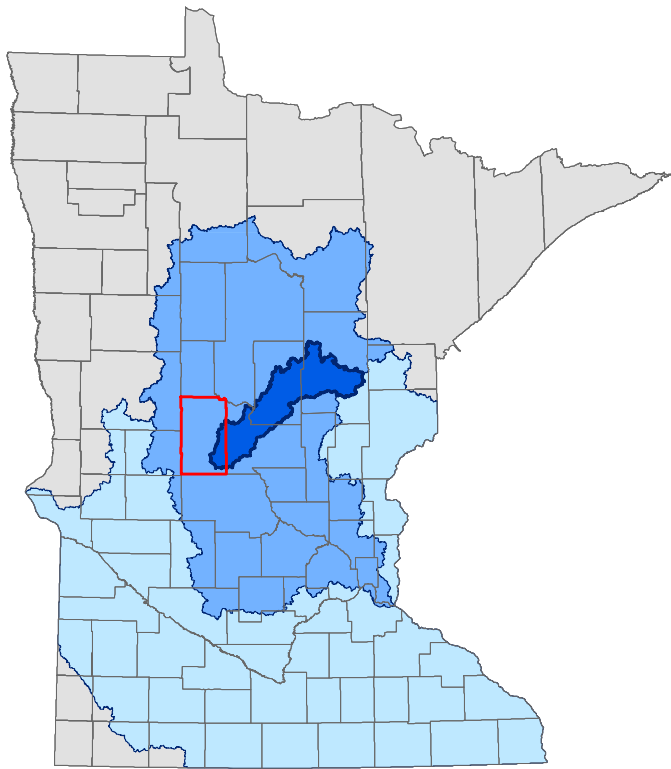
Watershed Data - MN DNR
 Impaired Waters - MN PCA
 County Data - Todd County GIS

Todd County GIS has made every effort to provide the most accurate and up-to-date information available and cannot be held responsible for any unforeseen errors or omissions.



Mississippi - Brainerd Watershed

Impaired Waters



- Impaired Stream
- Impaired Lake
- Perennial Stream
- Intermittent Stream
- Lake
- Minor Watershed Boundary
- City Limit
- State Highway
- County State Aid Highway
- County Road

HUC 8, DNR Level 4 Major Watershed

Mississippi River - Brainerd

HUC 4, DNR Level 2 Major Watershed

Mississippi Headwaters

HUC 2, DNR Level 1 Major Watershed

Upper Mississippi

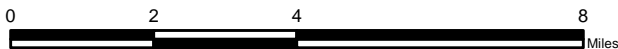
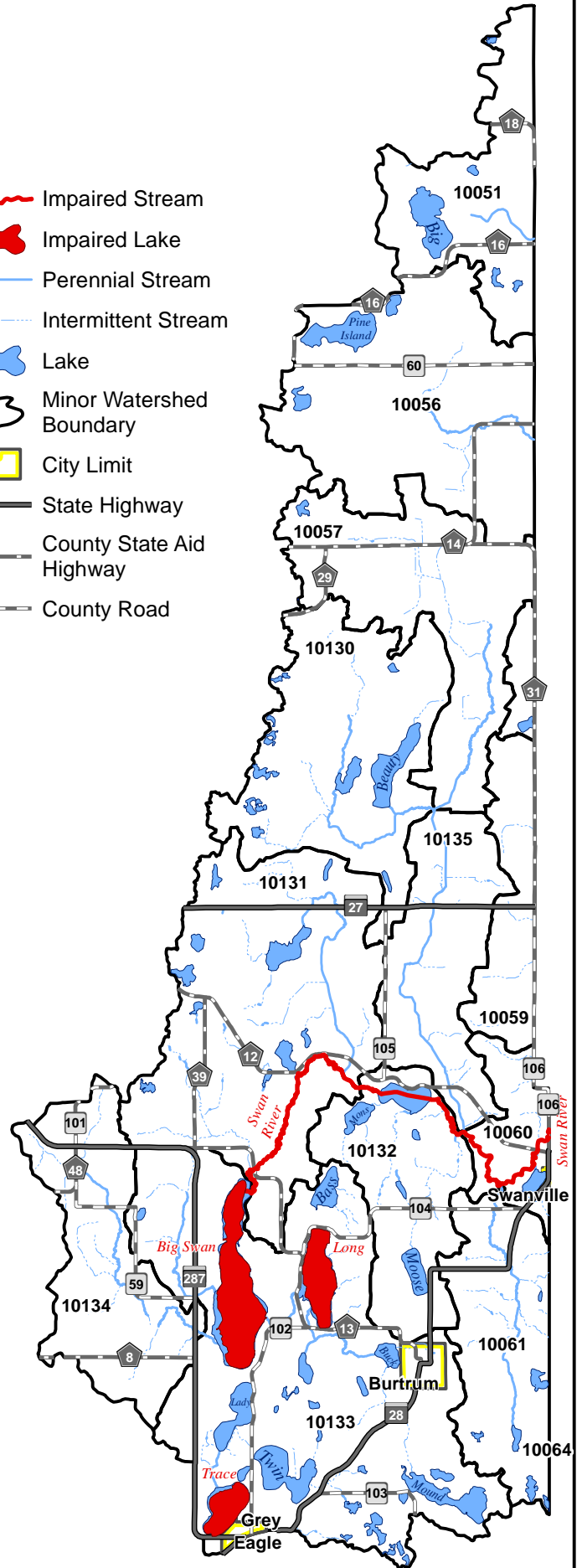
Todd County Boundary

County Boundary

Created by:
 Todd County GIS
 215 1st Ave S, Ste. 102
 Long Prairie, MN 56347
 320-732-4248

Data Sources:
 Watershed Data - MN DNR
 Impaired Waters - MN PCA
 County Data - Todd County GIS

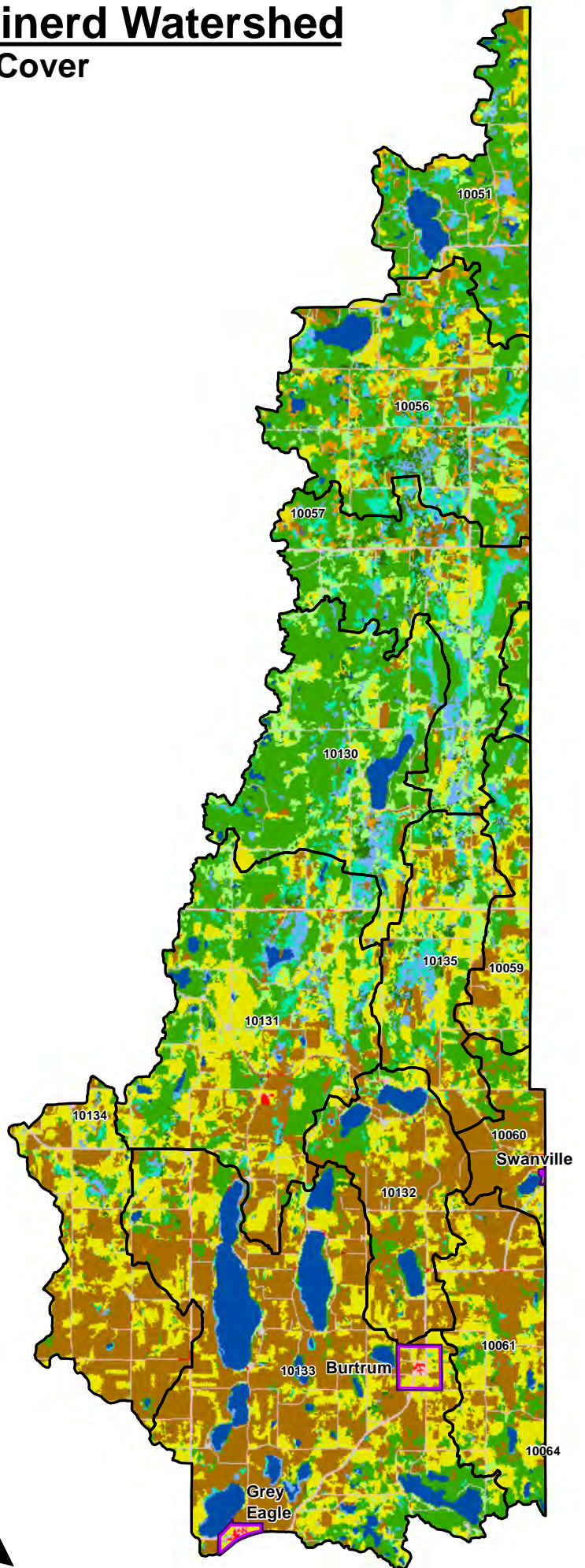
Todd County GIS has made every effort to provide the most accurate and up-to-date information available and cannot be held responsible for any unforeseen errors or omissions.



Mississippi - Brainerd Watershed

Land Cover

-  Barren Land
-  Cultivated Crops
-  Deciduous Forest
-  Developed, High Intensity
-  Developed, Low Intensity
-  Developed, Medium Intensity
-  Developed, Open Space
-  Emergent Herbaceous Wetlands
-  Evergreen Forest
-  Hay/Pasture
-  Herbaceous
-  Mixed Forest
-  Open Water
-  Shrub/Scrub
-  Woody Wetlands
-  Minor Watershed Boundary
-  City Limit



Created by:
 Todd County GIS
 215 1st Ave S, Ste. 102
 Long Prairie, MN 56347
 320-732-4248



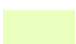



Data Sources:
 Land Cover Data - MRLC
 Watershed Data - MN DNR
 County Data - Todd County GIS

Todd County GIS has made every effort to provide the most accurate and up-to-date information available and cannot be held responsible for any unforeseen errors or omissions.

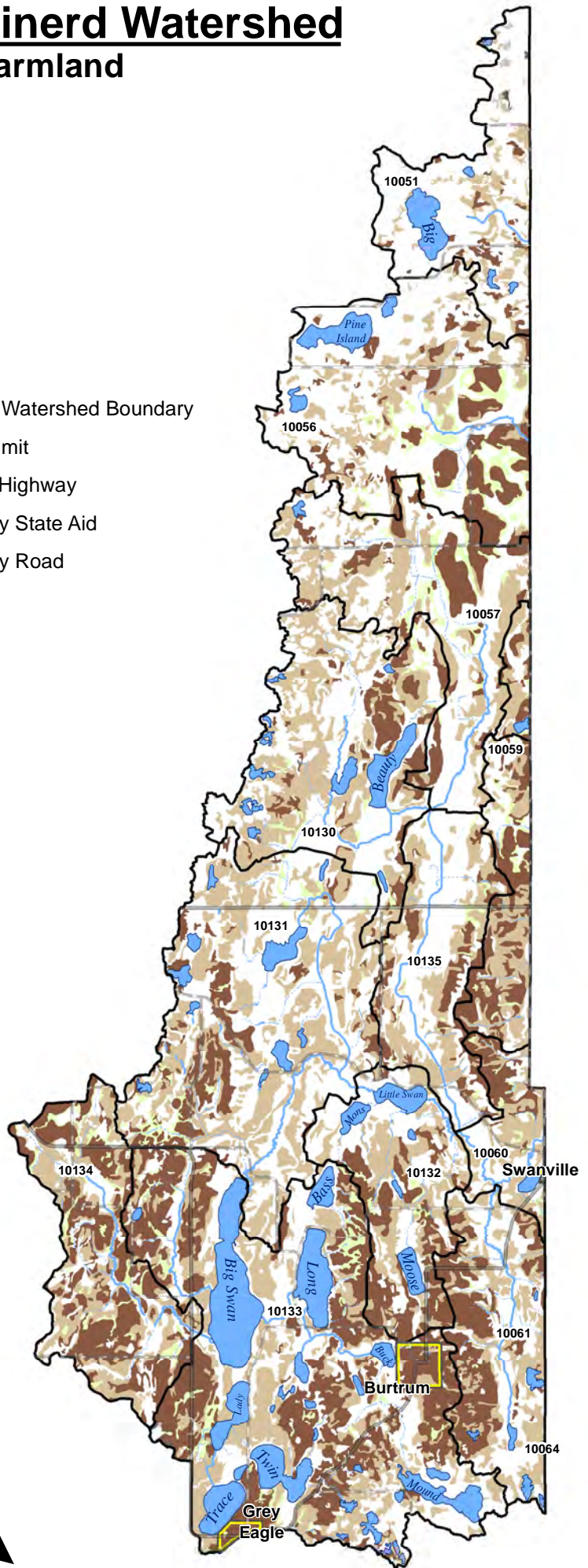


Mississippi - Brainerd Watershed

Prime Farmland

-  All Areas Are Prime Farmland
-  Farmland Of Statewide Importance
-  Prime Farmland If Drained
-  Lake
-  Perennial Stream
-  Intermittent Stream

-  Minor Watershed Boundary
-  City Limit
-  State Highway
-  County State Aid
-  County Road



Created by:
 Todd County GIS
 215 1st Ave S, Ste. 102
 Long Prairie, MN 56347
 320-732-4248









Data Sources:
 Farmland Data - USDA
 Watershed Data - MN DNR
 County Data - Todd County GIS

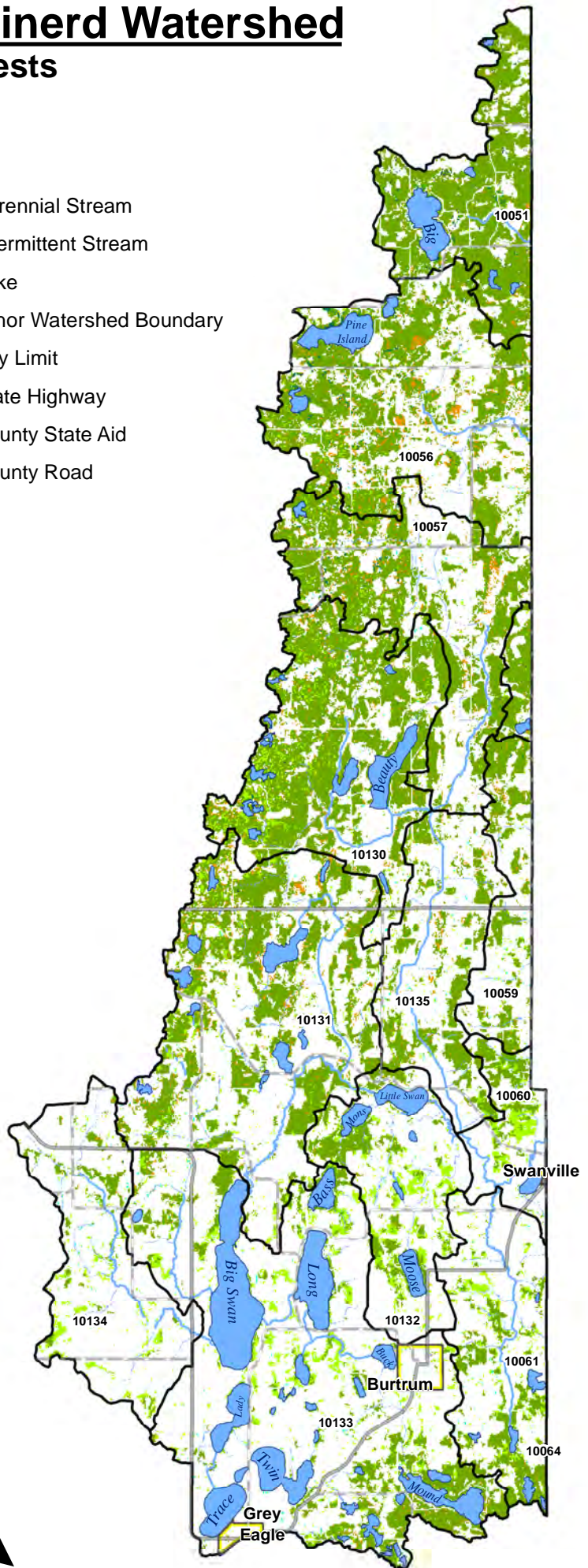
Todd County GIS has made every effort to provide the most accurate and up-to-date information available and cannot be held responsible for any unforeseen errors or omissions.



Mississippi - Brainerd Watershed Forests

-  Deciduous Closed Tree Canopy
-  Deciduous Open Tree Canopy
-  Evergreen Closed Tree Canopy
-  Evergreen Open Tree Canopy
-  Mixed Evergreen-
Deciduous Closed Tree Canopy
-  Mixed Evergreen-
Deciduous Open Tree Canopy

-  Perennial Stream
-  Intermittent Stream
-  Lake
-  Minor Watershed Boundary
-  City Limit
-  State Highway
-  County State Aid
-  County Road



Deciduous Closed Tree Canopy - Area dominated by deciduous tree species which contribute >75% of the total tree cover.

Deciduous Open Tree Canopy - Area dominated by deciduous tree species which contribute <75% of the total tree cover.

Evergreen Closed Tree Canopy - Area dominated by evergreen tree species which contribute >75% of the total tree cover.

Evergreen Open Tree Canopy - Area dominated by evergreen tree species which contribute <75% of the total tree cover.

Mixed Evergreen - Deciduous Closed Tree Canopy - Area dominated by a combination of evergreen and deciduous tree species which each contribute 25 - 75% of the total tree cover.

Mixed Evergreen - Deciduous Open Tree Canopy - Area dominated by a combination of evergreen and deciduous tree species which each contribute 25 - 75% of the total tree cover.

Closed Tree Canopy - Area dominated by trees with interlocking crowns (generally forming 60 - 100% crown cover).

Open Tree Canopy - Area dominated by trees with crowns not usually touching (generally forming 25 - 60% crown cover).

Created by:

Todd County GIS
215 1st Ave S, Ste. 102
Long Prairie, MN 56347
320-732-4248





Data Sources:



Vegetation Data - USGS
Watershed Data - MN DNR
County Data - Todd County GIS

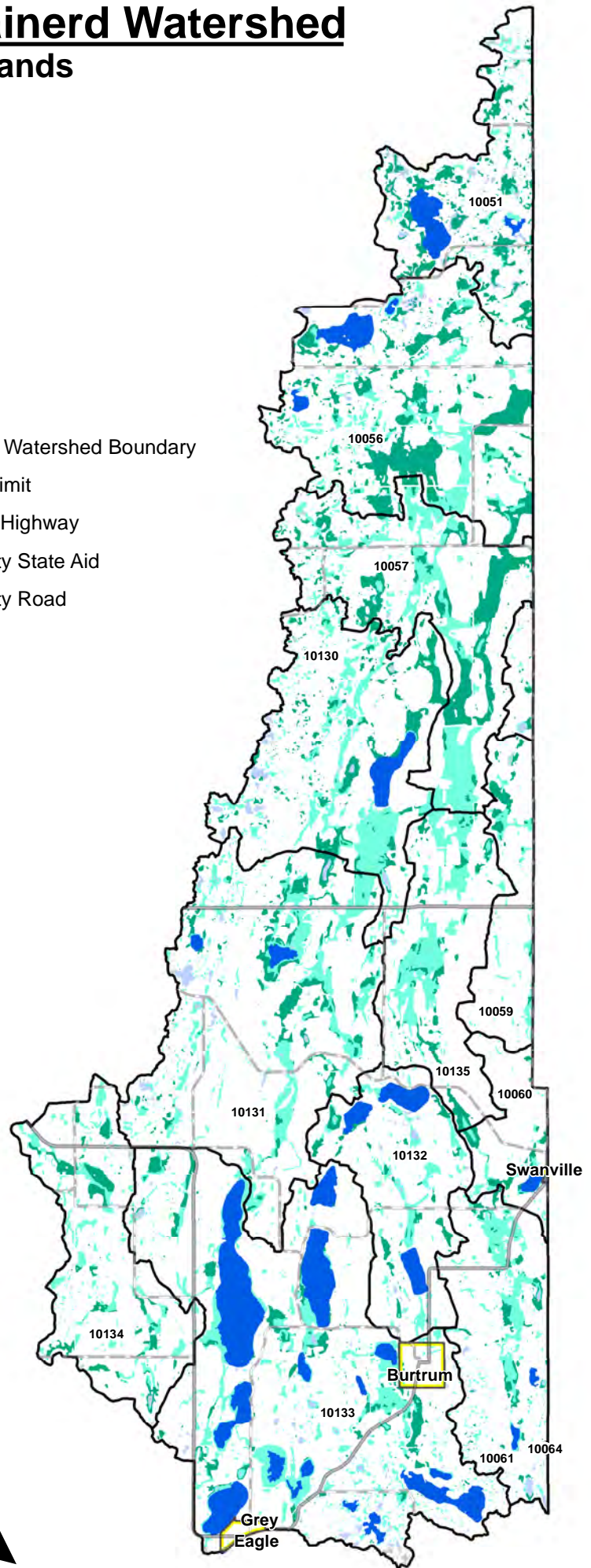
Todd County GIS has made every effort to provide the most accurate and up-to-date information available and cannot be held responsible for any unforeseen errors or omissions.



Mississippi - Brainerd Watershed Wetlands

-  Lake
-  Freshwater Pond
-  Riverine
-  Freshwater Emergent Wetland
-  Freshwater Forested/Shrub Wetland

-  Minor Watershed Boundary
-  City Limit
-  State Highway
-  County State Aid
-  County Road



Created by:
 Todd County GIS
 215 1st Ave S, Ste. 102
 Long Prairie, MN 56347
 320-732-4248

Data Sources:
 Wetland Data - USFWS
 Watershed Data - MN DNR
 County Data - Todd County GIS

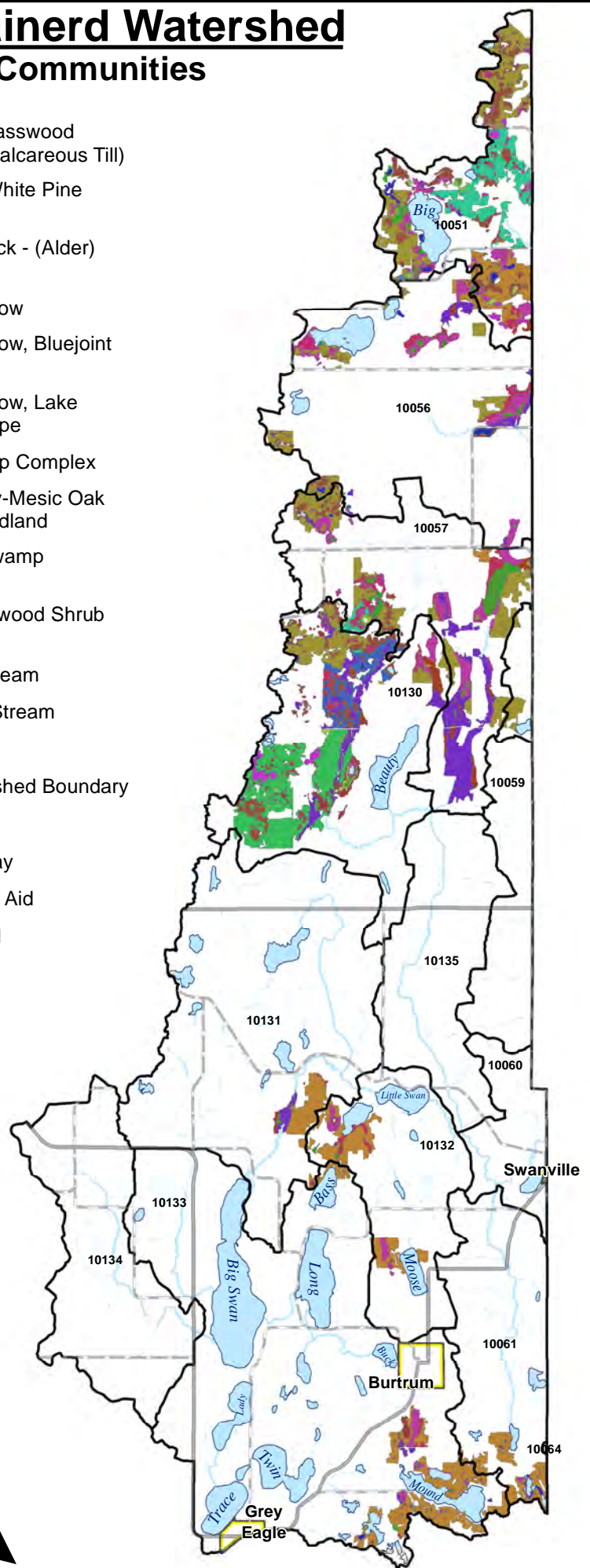
Todd County GIS has made every effort to provide the most accurate and up-to-date information available and cannot be held responsible for any unforeseen errors or omissions.



Mississippi - Brainerd Watershed

Native Plant Communities

- | | | | |
|--|---|---|--|
|  | Alder - (Maple - Loosestrife) Swamp |  | Red Oak - Basswood Forest (Noncalcareous Till) |
|  | Alder Swamp / Forested Peatland Complex |  | Red Pine - White Pine Forest |
|  | Beaver Wetland Complex |  | Rich Tamarack - (Alder) Swamp |
|  | Black Ash - Yellow Birch - Red Maple - Basswood Swamp (Eastcentral) |  | Sedge Meadow |
|  | Bog birch - Alder Shore Fen |  | Sedge Meadow, Bluejoint Subtype |
|  | Central Dry-Mesic Oak-Aspen Forest |  | Sedge Meadow, Lake Sedge Subtype |
|  | Central Mesic Hardwood Forest (Eastern) |  | Shrub Swamp Complex |
|  | Graminoid - Sphagnum Rich Fen (Basin) |  | Southern Dry-Mesic Oak (Maple) Woodland |
|  | Low Shrub Poor Fen |  | Tamarack Swamp (Southern) |
|  | Marsh - Open Water Complex |  | Willow - Dogwood Shrub Swamp |
|  | Meadow - Marsh - Fen - Swamp Complex |  | Perennial Stream |
|  | Northern Poor Fen |  | Intermittent Stream |
|  | Northern Rich Fen (Basin) |  | Lake |
|  | Northern Shrub Shore Fen |  | Minor Watershed Boundary |
|  | Northern Wet Alder |  | City Limit |
|  | Northern Wet Meadow/Carr |  | State Highway |
|  | Pin Oak - Bur Oak Woodland |  | County State Aid |
|  | Poor Tamarack - Black Spruce Swamp, Tamarack Subtype |  | County Road |



Created by:
 Todd County GIS
 215 1st Ave S, Ste. 102
 Long Prairie, MN 56347
 320-732-4248

Data Sources:
 MN County Biological Survey &
 Watershed Data - MN DNR
 County Data - Todd County GIS

Todd County GIS has made every effort to provide the most accurate and up-to-date information available and cannot be held responsible for any unforeseen errors or omissions.

